

BENCOR (Pty) Ltd.

Seated valves



Directional seated valves type VH, VHR and VHP

The directional seated valves types VH, VHR and VHP operate leakage free and are available in two different sizes.

They are operated via a hand lever on an eccentric shaft transferring the switching moment to an actuation pin acting on the valve elements (balls). The actuation either features a detent or is self returning to its idle position.

Valve banks type VHR are also available, featuring individual valves (type VH) connected in parallel and held together with tension rods.

Valves type VHP 1 size 1 are also available.



Nomenclature: Directional seated valve, leakage free

Design: Individual valve for pipe connection
Individual valve, manifold mounting, bankable

Actuation: Manual

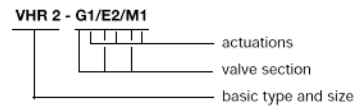
p_{max}: 500 ... 700 bar

Q_{max}: 12 ... 25 l/min

Basic types and general parameters

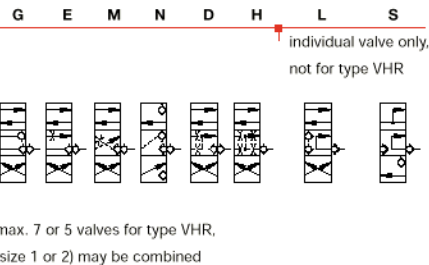
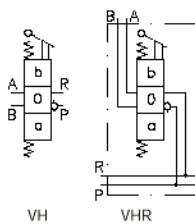
Basic type and size		Flow	Oper. pressure	Tapped ports
Individual valve	valve bank	Q _{max} (l/min)	p _{max} (bar)	P, R, A, B
VH 1	VHR 1	12	700	G 1/4
VH 2	VHR 2	25	500	G 3/8

Order coding example



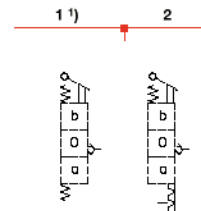
Flow pattern

Basic symbols



Actuations

spring return detent



¹⁾ Self return to idle position only up to approx. 50 bar. The hand lever has to be returned manually for pressure above 50 to 700 bar.