

# BENCOR (Pty) Ltd.

Seated valves



## Directional seated valves type WN and WH

These directional seated valves type WN and WH use spring loaded balls as valve elements and therefore do not show any leakage. They are manifold mounting and are available in four different sizes. These valves are very compact as the functional valve parts are partly integrated in the solenoid body. The basic versions are designed as 2/2- and 3/2-way directional valves, whereas 3/3-, 4/3-way functions require two valves to be installed on one valve sub-plate.

These valves may be directly installed in pipe systems, when equipped with sub-plates enabling pipe connection. Many optional functions incorporated in these sub-plates i.e. pressure limiting valve or restrictor check valve widen the field of application for this valve type.



The type WN (size 1 only) is more simply designed as type WH making its pricing more competitive but the max. permissible pressure is reduced as there are no moving seals and the armature cavity is not separately de-pressurized. Valve banks of these valve type are also available featuring several valves connected in parallel (see type BWN and BWH).

**Nomenclature:** Directional seated valve, leakage free

**Design:** Individual valve, manifold mounting combination with connection blocks for pipe connection

**Actuation:** Solenoid

**p<sub>max</sub>:** 350 ... 450 bar

**Q<sub>max</sub>:** 5 ... 60 l/min

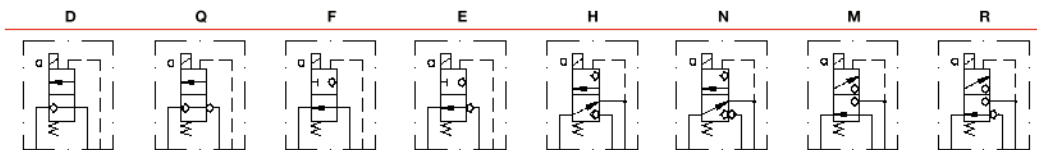
### Basic types and general parameters

Basic type and size	Flow	Oper. pressure	Tapped ports <sup>1)</sup>
	Q <sub>max</sub> (l/min)	p <sub>max</sub> (bar)	P, R, A
WN1	5	320...350	G 1/4
WH1	8	450	G 1/4
WH2	15	350	G 3/8
WH3	30	350	G 1/2
WH4	60	350	G 3/4

<sup>1)</sup> when combined with sub-plate for pipe connection

### Flow pattern

(symbols show type WH)



Type WN 1 without de-pressuring duct for the solenoid (leakage duct is obsolete)